

How to use this Map:

Locate where you live, work, and play. Use this map to plan a safe evacuation route. **If you are in the yellow area and need to evacuate, go immediately on foot as soon as it is safe to do so.** Practice evacuating so that you and your family know what to do during a real tsunami. Remember — **GO ON FOOT**. Roads are likely to be impassable.

Tsunami Zone signs are placed within the yellow zone as a reminder to evacuate this area when an earthquake occurs. **Entering and Leaving Tsunami Zone Signs** are placed on roads near where you cross from the white safe area into the yellow hazard zone. Take note of where these signs are located. If a large earthquake occurs, return at least as far as this point to be in a safe area. If you cannot reach this point, go as far or as high as you can. Every foot inland or upwards can make a difference.

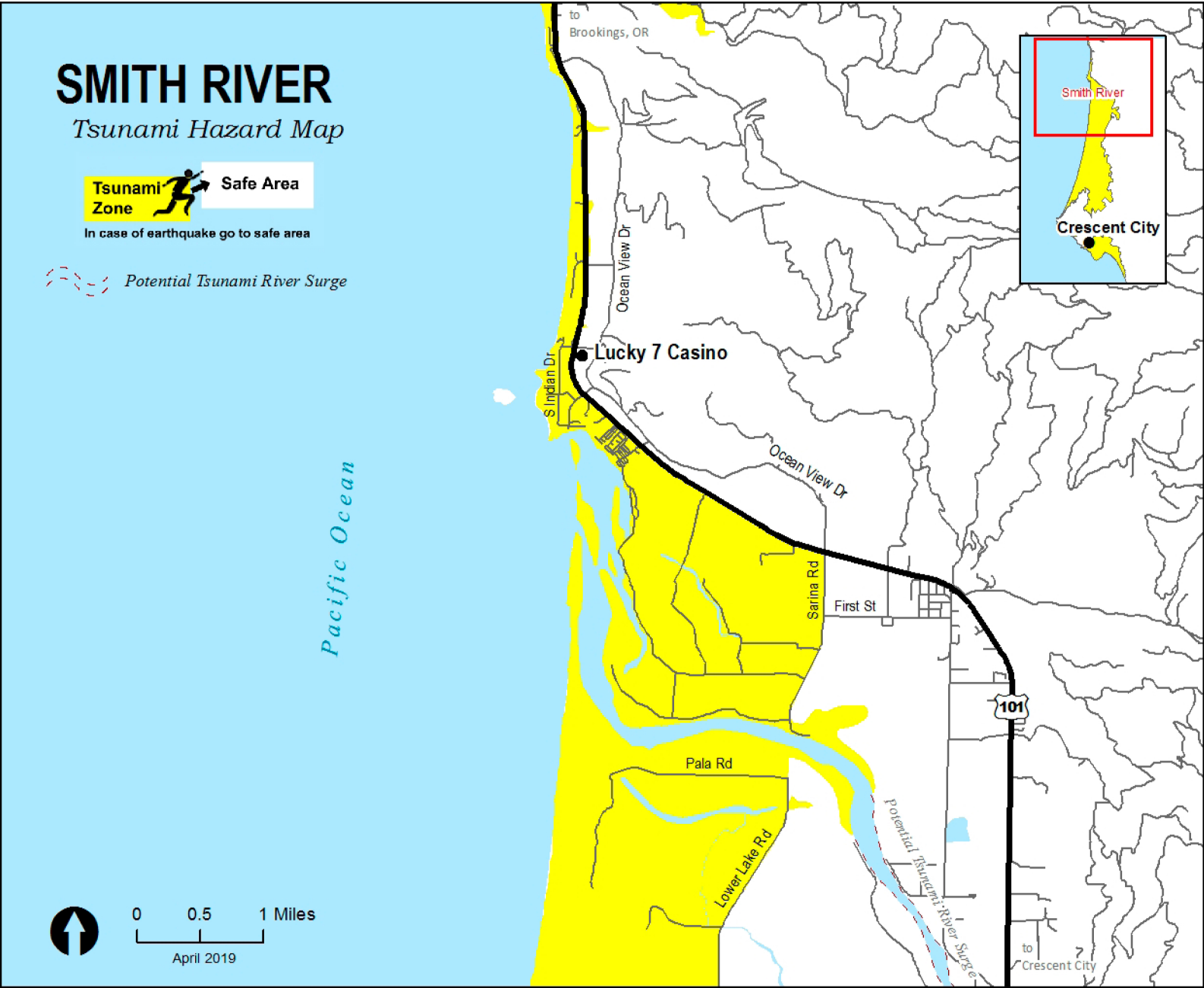
Outside the map area? Use signs to guide you to safe areas. If there are no signs, head to high ground or inland, without re-entering the tsunami zone, and keep moving until you feel safe. Every foot inland or upwards can make a difference. An interactive hazard map for Northwest California is posted at weather.gov/eureka/tsunami_map

Other beach hazards:

Sneaker waves can wash over rocks, levees, and far up beaches without warning. There can be more than twenty minutes of small waves between sneaker waves. Don't be fooled by an ocean that looks calm – stay back from the surf and never turn your back on the ocean.

Rising tides can cut off your route or force you to walk dangerously close to the surf. Know the tides and plan for rising water.

SAMOA, CA–Residents practice tsunami evacuation in an annual drill.



This map is to help you protect yourself from the worst-case tsunami expected along our coast. It is based on the Relative Tsunami Hazard Maps developed by Humboldt State University and tsunami inundation mapping by the California Geological Survey. It uses the best currently available information and may be

changed or updated as additional scientific information becomes available. It includes no information about the probability of a tsunami hitting our area and does not reflect how an actual tsunami may impact the region. **It is intended to support tsunami evacuation planning and should not be used for any other purposes.**